

SEE SHEET 34 FOR
STREET SECTIONS

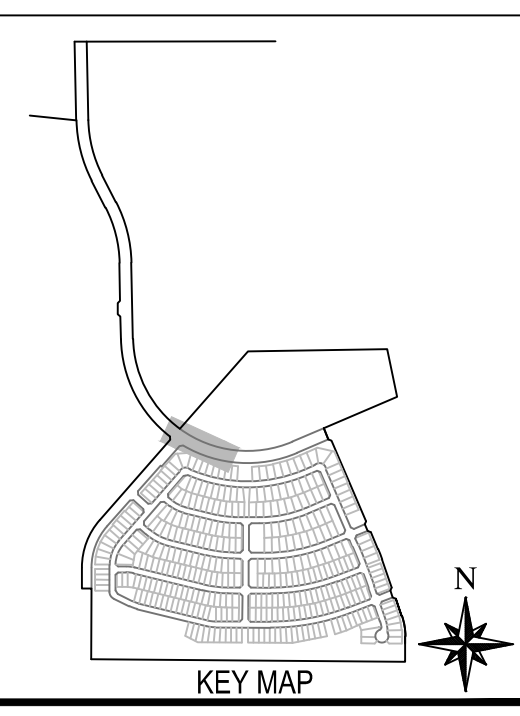
PAVING NOTES

- 2. CONSTRUCT STREET SECTION PER MAG SPEC SECTIONS 310 AND 321. SEE PAVEMENT SECTION ON DETAIL SHEET.
- 4. CONSTRUCT ASPHALT PAVEMENT EDGE PER MAG STD DTL 201, SAFETY EDGE.
- 7. INSTALL SURVEY MONUMENT PER MAG STD DTL 120, TYPE 'A'.
- 12. CONSTRUCT 6-IN VERTICAL CURB & GUTTER PER MAG STD DTL 220-1, TYPE 'A'.
- 13. CONSTRUCT 6-IN VERTICAL CURB W/ DEPRESSED LIP PER MAG STD DTL 220-1, TYPE 'A'.
- 36. CONSTRUCT CONCRETE 10-FT DETACHED SIDEWALK PER MAG STD DTL 230.
- 37. CONSTRUCT VALLEY GUTTER PER MAG STD DTL 240 WIDTH PER PLAN.
- 45. CONSTRUCT SIDEWALK RAMP PER COA STD DTL 1235-1.
- 59. CONSTRUCT MEDIAN ISLAND PER COA STD DTL A1220.
- 60. INSTALL STREET BARRICADE PER MAG STD DTL 130, TYPE 'B'. LENGTH OF BARRICADE PER PLAN.
- 62. INSTALL PAVEMENT MARKER FOR FIRE HYDRANT PER COA STD DTL A1609.
- 63. ADJUST MANHOLE RIM TO FINISHED GRADE PER COA STD DTL A1422.
- 64. ADJUST VALVE FRAME & COVER PER COA STD DTL A1391.
- 65. INSTALL MEDIAN CONCRETE PAVERS PER COA STD DTL A1221. USE BELGARD HOLLAND PAVERS 4"x8"x80mm, RED COLOR AND HERRINGBONE PATTERN.
- 67. INSTALL SIGN POST PER COA STD DTL A1600.
- 80. IRRIGATION SLEEVES. SEE IRRIGATION PLAN.
- 81. INSTALL THREE (3) 2-1/2" SCHEDULE 80 PVC CONDUIT WITH PULL TAPE FOR SECONDARY COMMUNICATIONS NETWORK PER COA STANDARD DETAIL A1720-2 TRENCH DETAIL.
- 82. INSTALL PULL BOX PER COA STANDARD DETAIL A1717.

BACK OF CURB CURVE TABLE

CURVE	DELTA	RADIUS	ARC	TANGENT	CHORD
BC5	93°44'10"	30.00'	49.08'	32.02	43.79
BC6	85°03'46"	25.00'	37.12'	22.93	33.80
BC7	79°41'55"	30.00'	41.73'	25.04	38.45
BC8	100°34'18"	25.00'	43.88'	30.10	38.46
BC9	35°47'32"	963.00'	601.58'	310.97	591.85
BC10	54°07'45"	1037.00'	979.69'	529.85	943.66
BC11	180°00'00"	1.03'	3.23'	INF	2.06
BC12	53°56'35"	1007.00'	948.07'	512.46	913.44
BC13	13°55'24"	1032.53'	250.92'	126.08	250.30
BC14	12°27'22"	500.58'	108.83'	54.63	108.61
BC67	12°02'32"	951.00'	199.88'	100.31	199.51

BACK OF CURB LINE TABLE		
LINE	BEARING	DISTANCE
L3	S41°15'55"W	24.24'
L4	N67°34'00"W	101.29'



NOTE:
ALL CONSTRUCTION SHALL BE IN ACCORDANCE WITH THE MOST RECENT EDITION OF THE CITY OF AVONDALE'S SUPPLEMENT TO THE M.A.G. SPECIFICATIONS AND STANDARD DETAILS CURRENTLY ON FILE AND AVAILABLE AT THE CITY OF AVONDALE'S ENGINEERING DEPARTMENT OR ONLINE AT THE CITY OF AVONDALE'S WEBSITE.

WOOD/PATEL
MISSION: CLIENT SERVICE®
(602) 335-8500
WWW.WOODPATEL.COM

ALAMAR

BROOKFIELD LAKIN, LLC
PROJECT NAME
ALAMAR - PHASE 2
PLAN TYPE
PAVING, STORM DRAIN, SIGNING AND MARKING PLAN
EL MIRAGE ROAD AND BROADWAY RD

EXPIRES 12-31-21

PLAN DATE
9/11/2020
LATEST REVISION DATE

SHEET NUMBER
9 OF 43
PROJECT NUMBER
174612.05

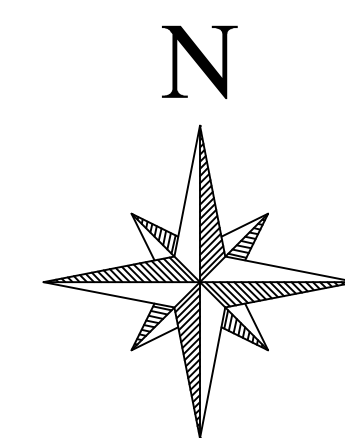
Half street improvements adjacent to the school site for the North half of Broadway Road. the improvement drawings for the adjacent way improvements includes water, storm drain, concrete, paving, dry utilities, signage and striping, street lights landscaping, irrigation and inerts.

BROADWAY ROAD

ALAMAR - PHASE 2

Littleton Elementary District New Elementary School at Alamar Development - 23 degrees southwest of due west center of Broadway Road and Avondale Blvd intersection.

LITTLETON ELEMENTARY SCHOOL DISTRICT NEW ELEMENTARY SCHOOL AT ALAMAR DEVELOPMENT
- ADJACENT WAYS SUBMITTAL FOR PHASE 2

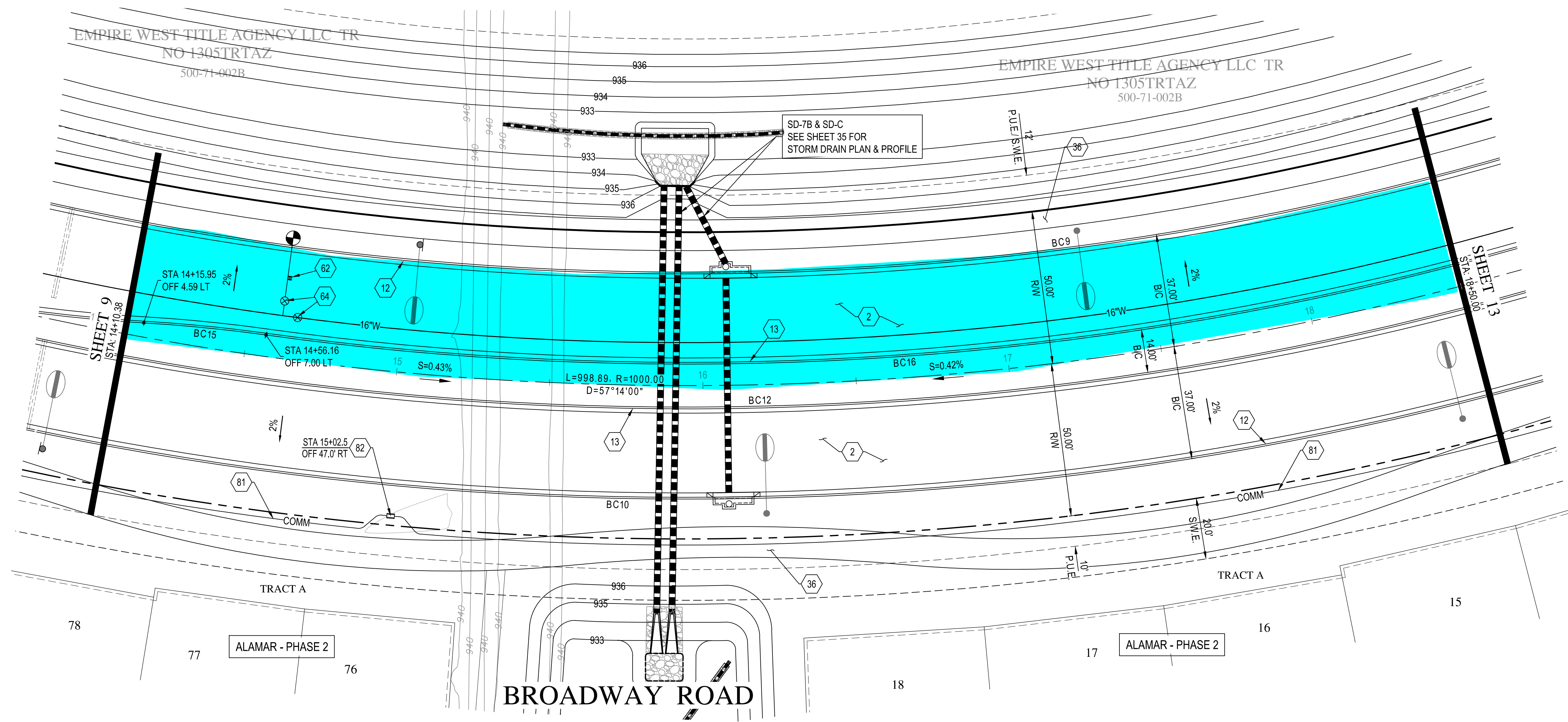


SEE SHEET 34 FOR
STREET SECTIONS

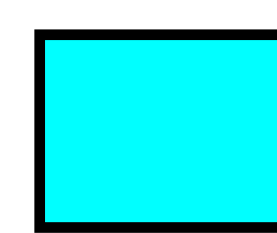
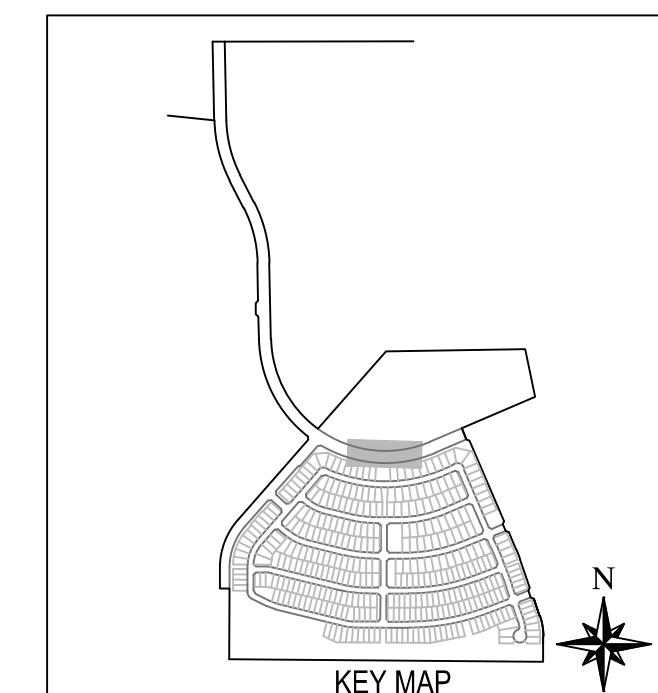


PAVING NOTES

- 2 CONSTRUCT STREET SECTION PER MAG SPEC SECTIONS 310 AND 321. SEE PAVEMENT SECTION ON DETAIL SHEET.
- 12 CONSTRUCT 6-IN VERTICAL CURB & GUTTER PER MAG STD DTL 220-1, TYPE 'A'
- 13 CONSTRUCT 6-IN VERTICAL CURB W/ DEPRESSED LIP PER MAG STD DTL 220-1, TYPE 'A'
- 36 CONSTRUCT CONCRETE 10-FT DETACHED SIDEWALK PER MAG STD DTL 230
- 62 INSTALL PAVEMENT MARKER FOR FIRE HYDRANT PER COA STD DTL A1609
- 64 ADJUST VALVE FRAME & COVER PER COA STD DTL A1391
- 81 INSTALL THREE (3) 2-1/2" SCHEDULE 80 PVC CONDUIT WITH PULL TAPE FOR SECONDARY COMMUNICATIONS NETWORK PER COA STANDARD DETAIL A1720-2 TRENCH DETAIL.
- 82 INSTALL PULL BOX PER COA STANDARD DETAIL A1717.



BACK OF CURB CURVE TABLE					
CURVE	DELTA	RADIUS	ARC	TANGENT	CHORD
BC9	35°47'32"	963.00'	601.58'	310.97	591.85
BC10	54°07'45"	1037.00'	979.69'	529.85	943.66
BC12	53°56'35"	1007.00'	948.07'	512.46	913.44
BC15	4°35'44"	499.42'	40.06'	20.04	40.05
BC16	31°05'47"	993.00'	538.93'	276.28	532.34



Half street improvements adjacent to the school site for the North half of Broadway Road. the improvement drawings for the adjacent way improvements includes water, storm drain, concrete, paving, dry utilities, signage and striping, street lights landscaping, irrigation and inerts.

Littleton Elementary District New Elementary School at Alamar Development - 23 degrees southwest of due west center of Broadway Road and Avondale Blvd intersection.

LITTLETON ELEMENTARY SCHOOL DISTRICT NEW ELEMENTARY SCHOOL AT ALAMAR DEVELOPMENT
- ADJACENT WAYS SUBMITTAL FOR PHASE 2



NOTE:
ALL CONSTRUCTION SHALL BE IN ACCORDANCE WITH THE MOST RECENT EDITION OF THE CITY OF AVONDALE'S SUPPLEMENT TO THE M.A.G. SPECIFICATIONS AND STANDARD DETAILS CURRENTLY ON FILE AND AVAILABLE AT THE CITY OF AVONDALE'S ENGINEERING DEPARTMENT OR ONLINE AT THE CITY OF AVONDALE'S WEBSITE.

WOOD/PATEL
MISSION: CLIENT SERVICE®
(602) 335-8500
WWW.WOODPATEL.COM

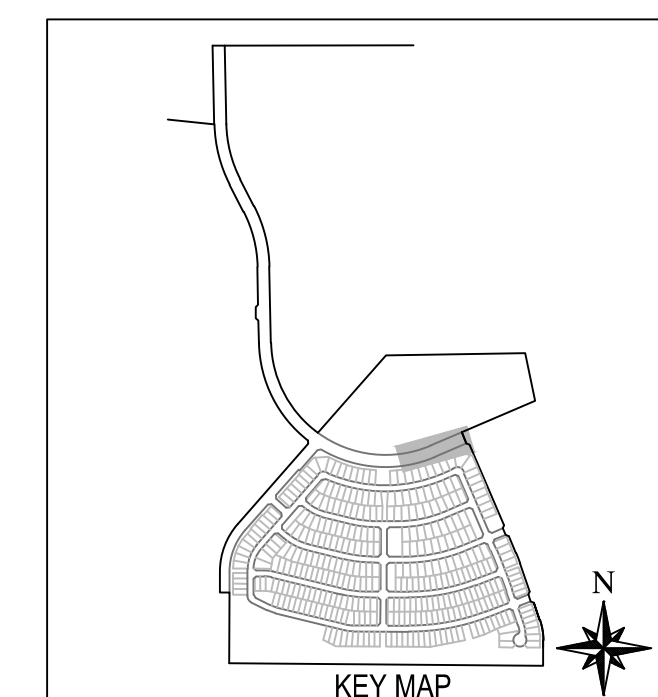
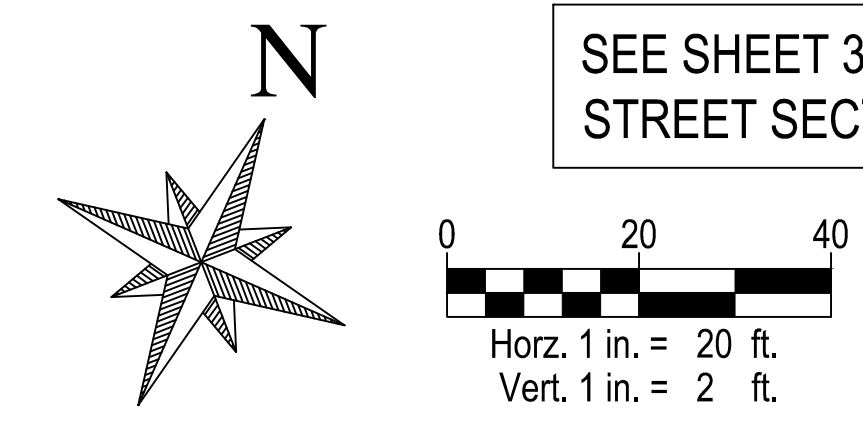
ALAMAR

BROOKFIELD LAKIN, LLC
PROJECT NAME
ALAMAR - PHASE 2
PLAN TYPE
PAVING, STORM DRAIN, SIGNING AND MARKING PLAN
EL MIRAGE ROAD AND BROADWAY RD

SEAL
Professional Engineer
31885
FRANK
MINGOS
State of Arizona
Expires 12-31-21

PLAN DATE
9/11/2020
LATEST REVISION DATE

SHEET NUMBER
11 OF 43
PROJECT NUMBER
174612.05



ENG 19-0327

Z:\2017\174612 05\Draw\Imp\OFFSITE\Paving\4612 05-013_014-PP.dwg (CHECKED BY: FMK DESIGNED BY: BD DRAFTED BY: BT)